

# Orcas Specifications\*

<b>Installation</b>	Installs on pipe from 1" to 20" nominal diameter depending on hardware selection 15 pipe diameters upstream, 5 diameters downstream for optimal performance [typical] Maximum diameter depends upon pipe material [20" for plastic, 18" for metal]			
<b>Pipe Materials</b>	Metal: Steel, Stainless Steel, Copper, Brass, Aluminum Plastic: PVC, HDPE, PIP			
<b>Flow Range</b>	Bi-directional; 0.1 ft/s to 20 ft/s (0.03 m/s to 6 m/s)			
<b>Performance</b>	±1.0% to 2.0% accuracy typical [for pipe sizes > 1.5"] ±2.0% to 3.0% accuracy typical [for pipe sizes < 1.5"] 0.5% repeatability  Under standard conditions, assuming fully developed and symmetrical flow profile [typically taken on a straight run of 15 diameters upstream and 5 diameters downstream; flow rate above 3 ft/s or 1m/s; non-aerated liquids]. If the equipment is used in a manner not specified by the manufacturer, the protection provided by the equipment may be impaired.			
<b>Display</b>	Flow measures display on SoundWater Technology's Orcas™ App [iOS or Android] Mobile devices connect wirelessly to Orcas with Bluetooth 4.0 [BT LE] Metric and English units			
<b>Data Logger</b>	Store up to 14 days of flow data			
<b>Software</b>	Save and recall setup information Mobile device app for iPhone, iPad, iPod Touch and Android devices			
<b>Hardware</b>	PIPE SIZE RANGE	LENGTH	PIPE MATERIALS	
	Orcas Mini	1" to 4.5"	19"	Steel, Stainless, Copper, Brass, Aluminum, Plastics
	Orcas Short	2" to 12"	22"	Steel, Stainless, Aluminum, Plastics
	Orcas Standard	2" to 12"	29"	Steel, Stainless, Copper, Brass, Aluminum, Plastics
	Orcas Extended	2" to 20"	29"	Steel, Stainless, Aluminum, Plastics
<b>Power</b>	Rechargeable battery (12+ hours), or USB-powered continuous operation (5 volts)**			
<b>Power Adapter</b>	For recharging battery - must use the 12W USB power adapter supplied with the Orcas			
<b>Environmental</b>	Ambient & Flow Temperatures -20° to 150° F [-20° to 65° C] Optional high temperature option -20° to 212° F [-20° to 100° C] IP65 splash proof Weather resistant			
<b>Manufacturer</b>	SoundWater Technologies, Wenatchee WA., USA			

\*Specifications subject to change.

## Markets

- Irrigation
- Water Parks
- Water
- Building Services
- Energy
- Petrochemical
- Oil & Gas
- Food & Beverage

## Benefits

- Portable
- Non-invasive
- Low-installation cost
- Accurate
- Flow Verification, not calibration
- Temporarily measure flow while repairing or replacing a permanent meter



### Let's Talk flowmeters!

Start simplifying your portable flow measurement process today, with Orcas.  
To learn more about Orcas, contact us at any time.



SoundWater Orcas

# Smart flowmeter. Smart phone. Smart idea.

Now available in 3 sizes: introducing Orcas Extended & Orcas Mini!

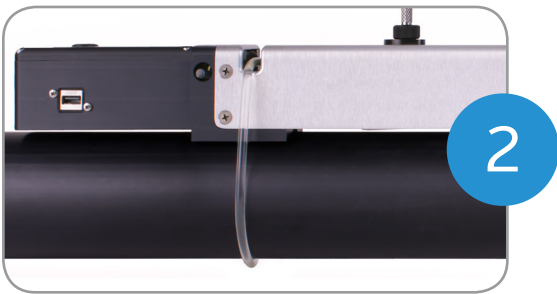
- Portable, accurate, versatile
- Installs on the outside of the pipe –measures through the wall of the pipe
- Covers pipe sizes ranging in diameter of 1" to 20"
- Built-in data logging
- Bluetooth 4.0 (BT LE) communication–no wires
- Reusable location settings
- Measures a wide range of fluids
- iOS and Android compatible
- Quick, easy setup

# Engineered for reliable, everyday use. Setup that's as easy as 1-2-3.



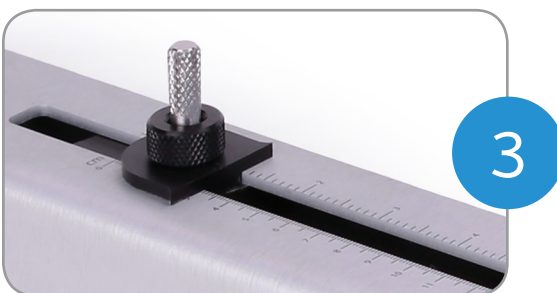
## Download the free Orcas App

Begin by downloading the free SoundWater Orcas app to your iPhone™ or Android™ bluetooth enabled mobile device from the Apple Store™ or Google Play™.



## Mount the Sensor

The convenient Cam Cleat lets you mount the sensor on the pipe in seconds. Bi-directional readings are transmitted wirelessly to your mobile device for display.



## Set your parameters

Select parameters from preset menus, adjust transducers spacing as indicated and start measuring!







This device complies with Part 15 of FCC Rules and Industry Canada license-exempt RSS standard(s). Operation is subject to the following two conditions: [1] this device may not cause harmful interference, and [2] this device must accept any interference received, including interference that may cause undesired operation. Contains FCC ID: XDULE40-S2, Contains IC: 8456A-LE4S2. CAN ICES-1/NMB-1; CAN ICES-3 (B)/NMB-3(B)

MODEL: SWT ORCAS-01



The Orcas app: Intuitive,  
efficient, accurate.

Interactive smart phone/tablet  
control app—iOS or Android

-  Save location information
-  Handy built-in pipe specifications  
—or add your own
-  Drag-and-drop output selection
-  English or metric units
-  Easy-to-use data logging
-  Select liner and liquid types  
—or define your own

Available for free at the iTunes™  
or Google Play™ stores.



## Applications

- Cooling Water
- Condenser Water
- Municipal Water
- Process Water
- Potable Water
- Ground Water
- Well Verification
- Pump Verification
- Water Treatment
- Food & Beverage
- Check System Meters
- Leak detection
- Ultra pure Water Measurement
- Clean in place evaluation
- Fire System testing