

Pipe Materials	Metal: Steel, Stainless Steel, Copper, Brass, Aluminum Plastic: PVC, CPVC, HDPE, PE, PIP		
Installation	Installs on pipe from 1" to 18" nominal diameter depending on hardware selection 15 pipe diameters upstream; 5 diameters downstream required for optimal performance (typical)		
Flow Range	Bi-directional; 0.1 ft/s to 20 ft/s (0.03 m/s to 6 m/s)		
Performance	±1.0% to 2.0% accuracy typical (for pipe sizes >1.5") ±2.0% to 3.0% accuracy typical (for pipe sizes <1.5") 0.5% repeatability <small>*Under standard conditions, assuming fully developed and symmetrical flow profile (typically taken on a straight run of 15 diameters upstream and 5 diameters downstream; flow rate above 3 ft/s or 1 m/s; non-aerated liquids). If the equipment is used in a manner not specified by the manufacturer, the protection provided by the equipment may be impaired.</small>		
Outputs (optional)	CURRENT (4-20 MA) Current proportional to flow; user programmable PULSE NFET (NPN type) open drain output with frequency proportional to flow; user programmable. MODBUS RTU RS485, user programmable port settings.		
Display	Flow measurements display on SoundWater's Orcas™ App (iOS or Android; Apple, Samsung or Google devices recommended) Mobile devices connect wirelessly to Orcas SP™ with Bluetooth 4.0 (BT LE) Metric and English units		
Data Logger	Store up to 14 days of flow data		
Software	Save and recall site setup information Mobile device App for iPhone, iPad, iPod touch and Android devices		
Hardware	PIPE SIZE RANGE	PIPE MATERIAL	
	Orcas SP Mini	1" to 4.5"	Most plastics and metals
	Orcas SP Std	2" to 12"	Most plastics and metals
	Orcas SP Ext	2" to 18"	Most plastics and metals (not compatible with copper or brass)
	Orcas SP Ext+	4" to 26"	Most plastics and metals (not compatible with copper or brass)
Power	12-24 VDC external power for continuous use 0.6W Typical (100 mA max current)		
Cellular Data	Combine Orcas SP™ with Ayyeka's Wavelet to streamline flow data to the cloud		
Environmental	Liquid/pipe temperature -40° to 160° F (-40° to 70° C) Optional high liquid/pipe temperature -40° to 212 F (-40° to 100° C) Ambient temperature -40° to 100 F (-40° to 37° C)		

Markets

- Water
- Wastewater
- Chemical
- Food & Beverage

Benefits

- Petrochemical
- Hydroelectric
- Irrigation
- Energy Management
- Reciprocity based hardware
- Installs outside pipe
- Low-installation cost
- Continuous flow monitoring
- Wireless
- Rugged



Let's talk flowmeters!
Start simplifying your flow measurement process today, with Orcas SP.
To learn more, contact us at any time.



SoundWater Orcas SP™

Fast, easy install.
Flow readings anywhere.
Links with your system.

- Installs on the outside of the pipe —measures through the wall of the pipe
- 4-20mA & Pulse, or MODBUS outputs
- 12 to 24 VDC external power
- Cellular data collection & web interface —when used with Ayyeka's Wavelet™
- Covers pipe sizes ranging in diameter of 1" to 26"
- iOS™ and Android™ compatible
- Bluetooth™ 4.0 (BT LE) communication—no wires
- Measures a wide range of fluids
- Quick, easy setup
- Accurate, high power —works where others won't
- Built-in data logging

Engineered for reliable, everyday use.

Setup that's as easy as 1-2-3.

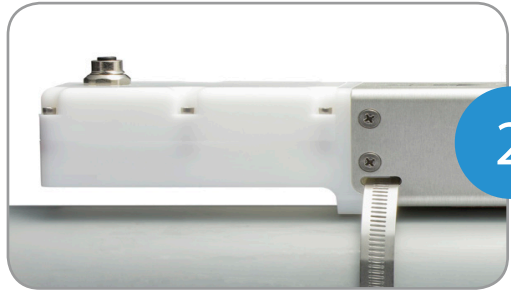
MADE IN USA



1

Download the free Orcas App

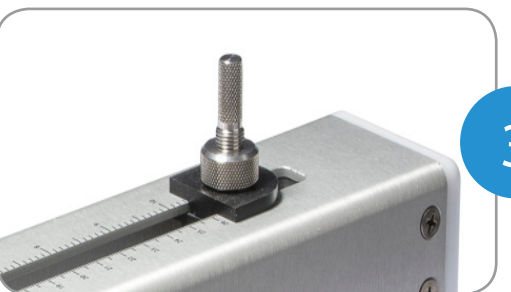
Begin by downloading the free SoundWater Orcas app to your iPhone™ or Android™ bluetooth enabled mobile device from the Apple Store™ or Google Play™.



2

Connect Power and Mount the Sensor

The convenient Cam Cleat lets you mount the sensor on the pipe in seconds. Bi-directional readings are transmitted wirelessly to your mobile device for display.



3

Set your parameters

Select parameters from preset menus, adjust transducers spacing as indicated and start measuring!

This device complies with Part 15 of FCC Rules and Industry Canada license-exempt RSS standard(s). Operation is subject to the following two conditions: (1) this device may not cause harmful interference, and (2) this device must accept any interference received, including interference that may cause undesired operation. Contains FCC ID: XDULE40-S2, Contains IC: 8456A-LE452. CAN ICES-1/NMB-1; CAN ICES-3 (B)/NMB-3(B)

MODEL: SWT ORCAS-01



Applications

- Cooling Water
- Condenser Water
- Municipal Water
- Process Water
- Potable Water
- Ground Water
- Well Verification
- Pump Verification
- Water Treatment
- Food & Beverage
- Check System Meters
- Leak detection
- Ultra pure Water Measurement
- Clean in place evaluation
- Fire System testing

The Orcas app: Intuitive, efficient, accurate.

Interactive smart phone/tablet control app—iOS or Android

- Connect to SCADA, PLC
— 4-20mA, pulse or MODBUS output
- Handy built-in pipe specifications
—or add your own
- Cellular Data Collection (IoT)
— when used with Ayyeka's Wavelet
- English or metric units
- Easy-to-use data logging
- Selectable pipe and liquid types
—or define your own

Available for free at the iTunes or Google Play stores.

1-509-899-7838

soundwatertech.com

Wenatchee, WA. USA