



Quick Start Guide

Welcome to SoundWater Camano™.

This guide shows you how to set up your new meter to start taking readings. Camano ships complete with power cabling.



MODEL: SWT CAMANO-01

© 2017 SoundWater Technologies, Inc.

Let's get started.

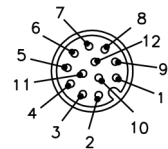
1 Connect to Power

Connect 12-24V DC or AC power using the supplied cable. For both power and communications, use the wire color codes shown below (for the supplied connecting cable).

Wire Color Codes:

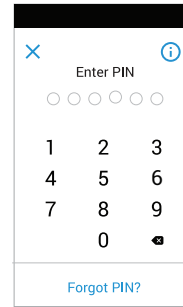
- 1 Analog & digital isolated ground 0V
- 2 MODBUS Tx- [D-, A]
- 3 Pulse output, open drain
- 4 4-20mA output
- 5 MODBUS Tx+ [D+, B]
- 6 MODBUS, isolated ground
- 7 Not connected
- 8 Power 12-18V DC or AC
- 9 Alarm output, open drain
- 10 MODBUS Rx- [D-, A]
- 11 Power ground 0V
- 12 MODBUS Rx+ [D+, B]

Supplied Cable Pinout:



2 Unlock the App

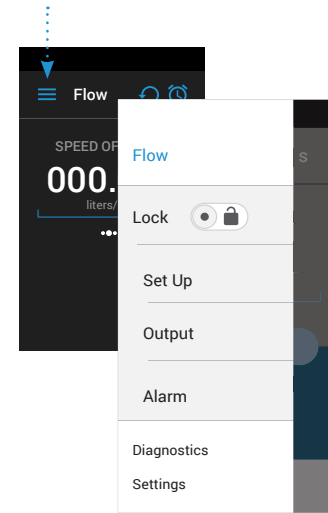
Choose and enter your own PIN (6-digit access code)– and remember it, as you'll need it going forward to access the app.



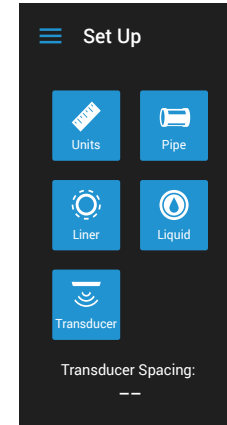
3 Prepare for Set up

Use the Drawer Icon [≡] to access Camano's menu–then select 'Set Up' for parameter settings.

Parameter settings are protected behind a lock. To unlock, simply tap on the Lock icon [🔒] and enter your PIN.



4 Set pipe and Liquid Parameters



Units - Toggle between metric and Imperial units of measure. Select **Flow Rate**, **Volume** and **Velocity** from Camano's pre-loaded values or add your own custom values.

Pipe - Select **Pipe Type** and **Wall Classifications** from Camano's pre-loaded values or add your own custom values.

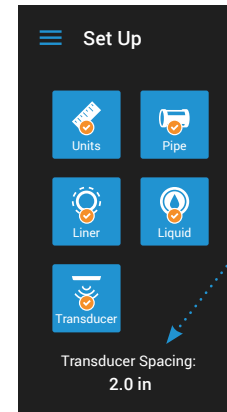
Liner - Choose **Liner** and **No Liner**. With Liner selected, choose **Liner Material** from Camano's pre-loaded database, or add your own custom values. Enter a custom value to add **Thickness**.

Liquid - Select a **Liquid Type** from pre-loaded values, or add your own custom values.

Transducer - Select the Transducer **Type** and **Orientation**.

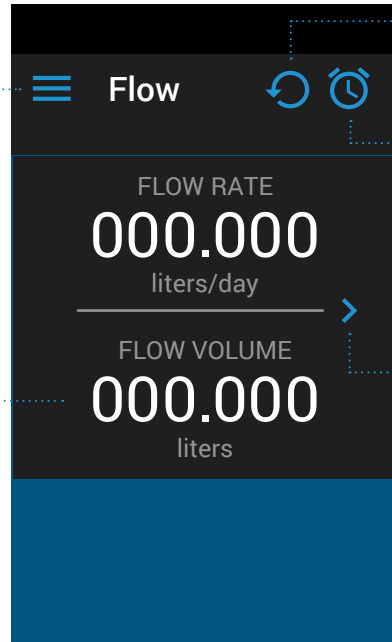
5 Set Transducer Spacing

Once you've set the parameters, Camano displays your **Transducer Spacing**. Use this value to set the position of the transducers on the Camano Sensor.



Getting to know the Camano app interface.

Tap to access the apps PIN protected menu options: Set-Up, Output, Alarms, Diagnostics and Settings



Your flow information will display once the transducer rulers have been properly set on the Camano Sensor.

Tap to refresh the interface.

Alarm icon changes based on the status of the alarm (on, off, and alert).

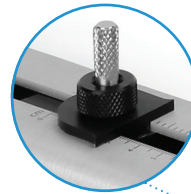


Swipe to page through Flow Rate, Flow Volume, Speed of Sound and Flow Velocity readings.

Adjust the rulers to set the transducer spacing specified by the Camano app.



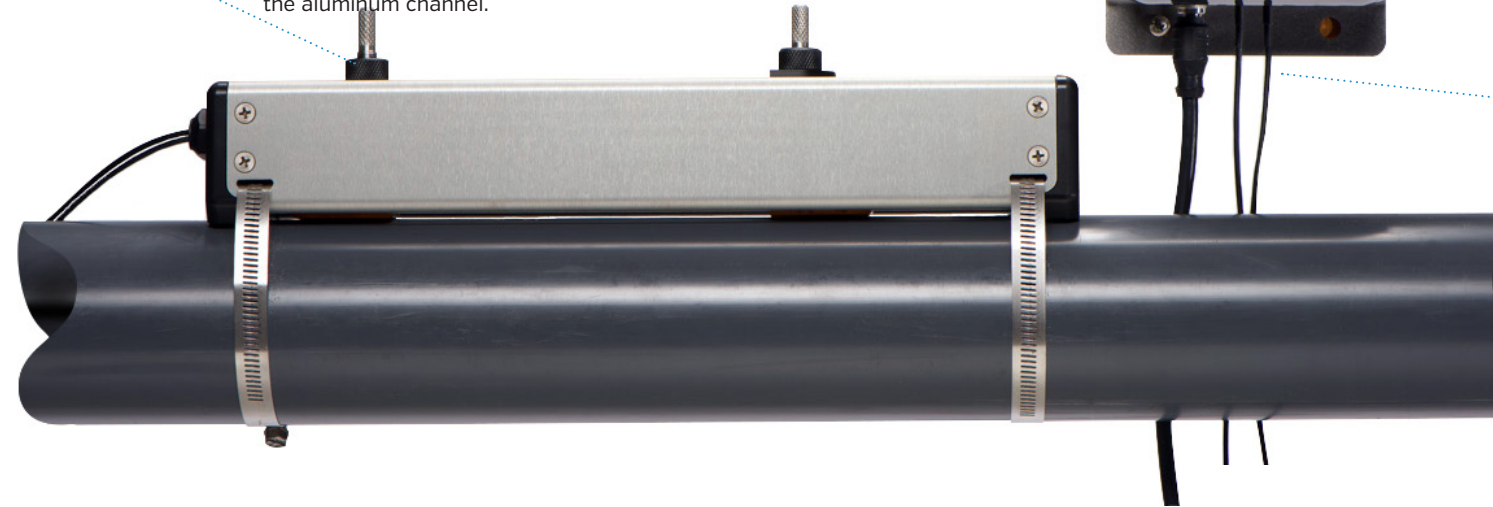
Preparing and mounting the Camano Sensor.



1 Gently rotate and retract the silver knobs counter-clockwise until they're slightly inside the aluminum channel.

2 Cover the entire bottom face of each transducer with the coupling gel.

3 Strap the sensor to the pipe. Assure the footings are axially aligned to the pipe.



4 Rotate the silver knobs clock-wise to press both transducers firmly onto the pipe.

5 Connect the transducer cable to the Camano box. Insert the transducer cable circular connection into the left-hand-side 5 pin receptacle. Hand tighten only.



6 Start taking your flow readings! When powered, the flowmeter launches automatically.

Support

Contact SoundWater Technologies at: support@soundwatertech.com. Or call 1-509-899-7838.