

## Camano Specifications\*

<b>Installation</b>	15 pipe diameters upstream, 5 diameters downstream for optimal performance (typical)			
<b>Flow Detection</b>	Bi-directional; 0.1 ft/s to 20 ft/s [0.03 m/s to 6 m/s]			
<b>Pipe Size</b>	1" to 24" (nominal)			
<b>Performance</b>	<b>PIPE SIZE</b>	<b>ACCURACY</b>	<b>OPERATING RANGE</b>	<b>REPEATABILITY</b>
	3" to 24"	±1.0% to 2.0% typical	-20 to 20 ft/s [-6 to 6 m/s]	0.5%
	1" to 2"	±2.0% to 3.0% typical	-20 to 20 ft/s [-6 to 6 m/s]	0.5%
	*Under standard conditions, assuming fully developed and symmetrical flow profile (typically taken on a straight run of 15 diameters upstream and 5 diameters downstream; flow rate above 3 ft/s or 1m/s; non-aerated liquids). If the equipment is used in a manner not specified by the manufacturer, the protection provided by the equipment may be impaired.			
<b>Display</b>	Android-based touchscreen user interface; backlit; 20+ year lifetime with power save mode 3+ year lifetime with full-power, continuous use Metric and English units			
<b>Software</b>	Android OS/Android-based app, easy software updates via USB thumb drive			
<b>Power</b>	12-24 V DC or AC, external power; 400mA typical@20 V, 1 A inrush Recommended external AC-DC converter part #PLUS ML30.241			
<b>Environmental</b>	IP65 splash proof, Weather resistant, Corrosion resistant			
<b>Materials</b>	<b>CONTROL BOX</b> Polycarbonate enclosure, glass touch screen, stainless steel circular connector, nickel plated brass USB connector, nickel plated brass transducer connector, EPDM rubber <b>BACKPLATE</b> Stainless steel <b>TRANSDUCER ASSEMBLY</b> Anodized aluminum housing, acetal footings, aluminum transducer strain relief, PVC strain relief, EPDM O-rings, EPDM strain relief gasket, stainless steel fasteners, epoxy silk screen, PVC coaxial cable, nickel plated brass coaxial cable connectors <b>MOUNTING STRAPS</b> Stainless steel			
<b>Temperature</b>	Ambient & Fluid: -20° to 150° F [-29° to 65° C]			
<b>Outputs</b>	NOTE: The isolation for all outputs is as a group; that is, all of the outputs share a common reference. <b>CURRENT (4-20 MA)</b> Isolated 4-20 mA, directly proportional to flow—4 mA/zero flow (fixed), 20 mA/user programmable flow. Accuracy (linearity): 16-bit (15 ppm); <b>PULSE</b> Isolated, NFET (NPN type) open drain output with a frequency directly proportional to flow Maximum frequency: 10 kHz; mark: space ratio = 50.0: 50.0 (accurate to < 1 ppm) <b>DIGITAL ALARM</b> Isolated, NFET (NPN type) open drain output, configured to change state at any user-selected combination of: (1) high flow, (2) low flow, (3) poor acoustic signal [e.g., empty pipe, disconnected transducers, etc.]; (4) open 4-20 mA circuit <b>MODBUS RTU</b> Isolated, RS485 full or half duplex. User configurable port settings.			
<b>Security</b>	Passcode protected setup & configuration			
<b>Manufacture</b>	SoundWater Technologies, United States			

\* Specifications subject to change.



### Let's Talk flowmeters!

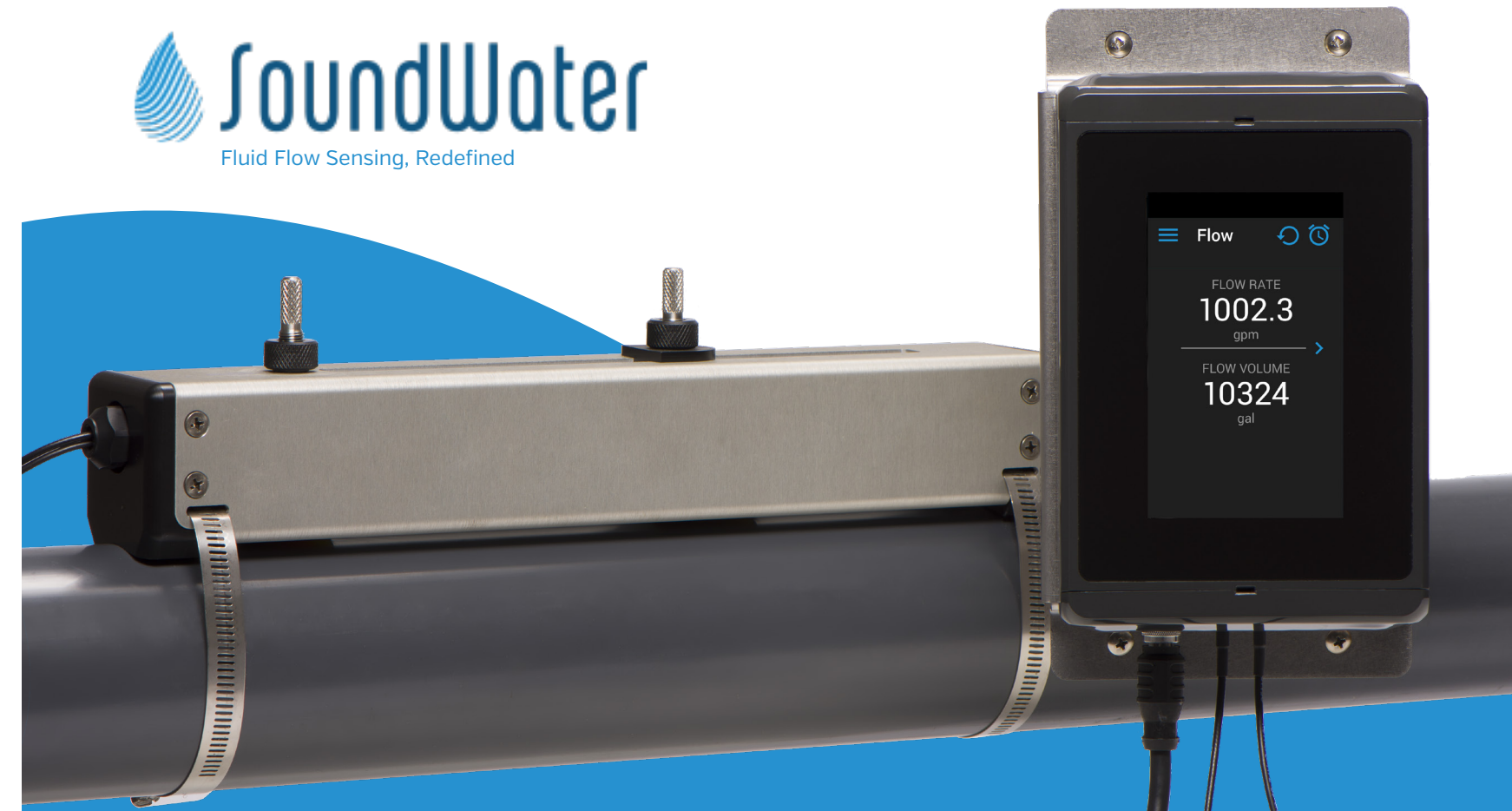
Start simplifying your flow measurement process today, with Camano. To learn more about Camano, contact us at any time.

1-509-899-7838

soundwatertech.com

sales@soundwatertech.com

SWT 7343 R01



## SoundWater Camano

# The Flowmeter Engineered for the Digital Age

- Installs on the outside of the pipe  
–measures through the wall of the pipe
- Android-based, color touchscreen display for unparalleled use-of-use
- Cellular data collection & web interface  
–when used with Ayyeka's Wavelet™
- Quick, easy setup
- Flexible control unit mounting and connection options
- Analog and digital outputs that integrate with automated systems
- Measures a wide range of fluids and pipe types, including challenging applications
- Accurate, high power  
–works where others won't

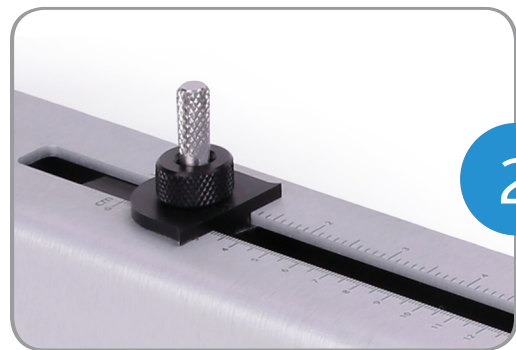
1-509-899-7838 :: soundwatertech.com

# Track fluid flow – from outside the pipe. Setup that's as easy as 1-2-3.



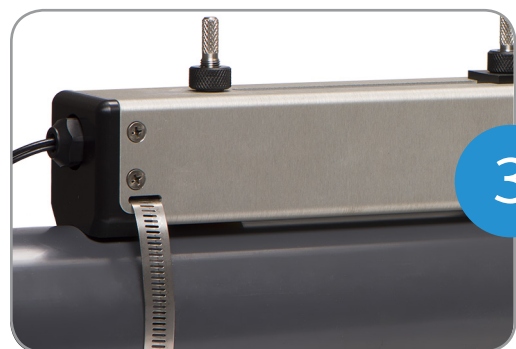
## Connect to a power source

Flexible brackets let you quickly and easily wall-mount the Camano control unit. Then connect the display to power & communications (as needed), and a pair of sensors (50 feet of cabling included) to your in-house automated systems.



## Set parameters

Power up the Camano control unit, and use the built-in, touchscreen app to select parameters (or enter your own) using preloaded pipe and fluid data, preset menus and plain-language dialogs –not complex codes or cumbersome keystrokes. In seconds, Camano displays optimal transducer spacing.



## Mount Sensor

Clamp transducers onto the pipe (Camano comes with a precision ruler for accurate placement), secure wiring, and you're ready to monitor, log, and output to automated systems.

## The Camano app: Interactive, intuitive, efficient, accurate.



Interactive, smart control



Set alarms to alert for high flows



Built-in pipe, liner and liquid specifications –or add your own



Drag-and-drop output selection for aM&T & BEM's systems



English or metric units



Easy data logging



## Markets

- Building Services
- Chemical
- Energy Management
- Food
- Petrochemical
- Power Generation
- Water
- Waste Water
- Irrigation



## Benefits

- Non-invasive Sensing–no cutting pipe or shut down
- 4-20mA, pulse, MODBUS, and digital alarm outputs
- Cellular data collection–when used with Ayyeka Wavelet
- Easy set-up, integration, use, and ongoing enhancement
- Highly accurate flow sensing and data logging
- High power–works where others won't
- Low installation cost



## Applications

- Cooling Water
- Condenser Water
- Water/Glycol solutions
- Municipal Water & Waste Water
- Process Water
- Potable Water
- Diesel & Fuel Oils
- Ground Water
- Semiconductor
- Pump Verification
- Petroleum products
- Water Treatment
- Food & Beverage
- HVAC & Energy System Audits
- Ultra Pure Water Measurement